



HDC Polyclonal Antibody

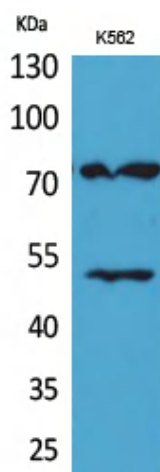
Catalog No	YP-Ab-02862
Isotype	IgG
Reactivity	Human;Mouse;Rat
Applications	WB;IHC;IF;ELISA
Gene Name	HDC
Protein Name	Histidine decarboxylase
Immunogen	The antiserum was produced against synthesized peptide derived from the Internal region of human HDC. AA range:201-250
Specificity	HDC Polyclonal Antibody detects endogenous levels of HDC protein.
Formulation	Liquid in PBS containing 50% glycerol, 0.5% BSA and 0.02% sodium azide.
Source	Polyclonal, Rabbit,IgG
Purification	The antibody was affinity-purified from rabbit antiserum by affinity-chromatography using epitope-specific immunogen.
Dilution	WB: 1/500 - 1/2000. IHC-p: 1:100-300 ELISA: 1/20000.. IF 1:50-200
Concentration	1 mg/ml
Purity	≥90%
Storage Stability	-20°C/1 year
Synonyms	HDC; Histidine decarboxylase; HDC
Observed Band	72kD
Cell Pathway	cytosol,
Tissue Specificity	Leukemia,
Function	catalytic activity:L-histidine = histamine + CO(2).,cofactor:Pyridoxal phosphate.,pathway:Amine and polyamine biosynthesis; histamine biosynthesis; histamine from L-histidine: step 1/1.,similarity:Belongs to the group II decarboxylase family.,subunit:Homodimer.,
Background	This gene encodes a member of the group II decarboxylase family and forms a homodimer that converts L-histidine to histamine in a pyridoxal phosphate dependent manner. Histamine regulates several physiologic processes, including neurotransmission, gastric acid secretion,inflammation, and smooth muscle tone.[provided by RefSeq, Aug 2010],
matters needing attention	Avoid repeated freezing and thawing!



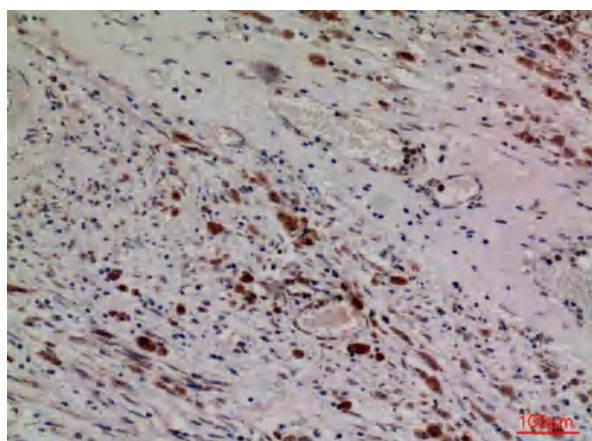
Usage suggestions

This product can be used in immunological reaction related experiments. For more information, please consult technical personnel.

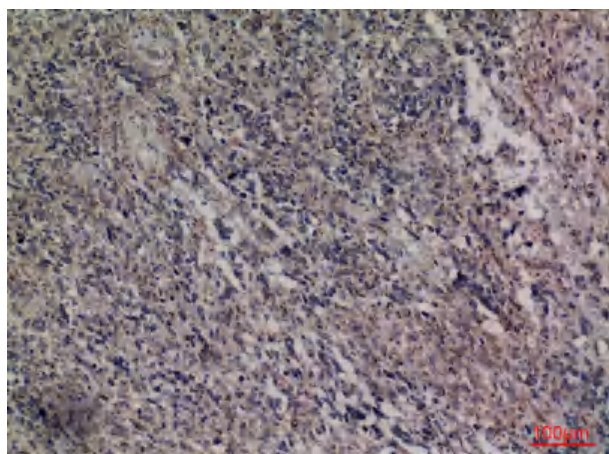
Products Images



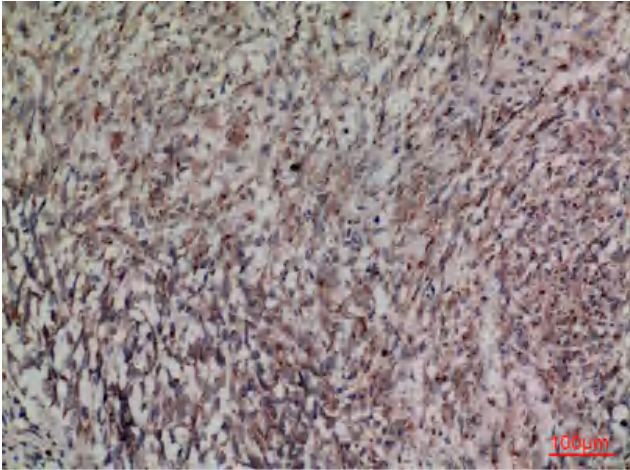
Western Blot analysis of K562 cells using HDC Polyclonal Antibody. Secondary antibody(catalog#:RS0002) was diluted at 1:20000



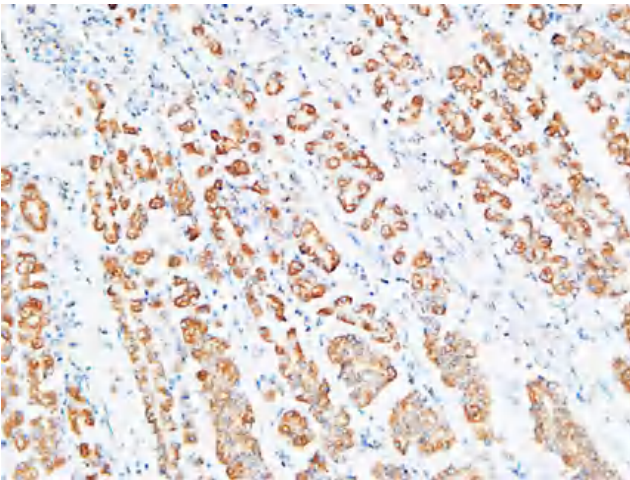
Immunohistochemical analysis of paraffin-embedded human-brain, antibody was diluted at 1:100



Immunohistochemical analysis of paraffin-embedded human-brain, antibody was diluted at 1:100



Immunohistochemical analysis of paraffin-embedded human-brain, antibody was diluted at 1:100



Immunohistochemical analysis of paraffin-embedded Human stomach. 1, Antibody was diluted at 1:200(4° overnight). 2, High-pressure and temperature EDTA, pH8.0 was used for antigen retrieval. 3,Secondary antibody was diluted at 1:200(room temperature, 30min).